

TESTED TO COMPLY WITH



ASTM
E3022-18
Standard

SPECTROLINE®
NDT

EagleEye™ 2

UV-A/White Light LED Inspection Kit

EK-3000

- ▶ Nominal steady-state UV-A (365 nm) intensity of $4,500 \mu\text{W}/\text{cm}^2$ at 15 in (38 cm)
- ▶ Low visible light emission - less than 1 foot-candle (<11 lux)



Dust Tight &
Water Resistant



Lightweight
& Rugged



Instant-On
Operation

HEAD STRAP

Option for hands free lamp operation



LED LAMP

Lamp With UV-A & White LED's



SPRAY CAN MOUNT

Attach lamp to ANY magnetic particle can for use with Magnetic Yoke



TOGGLE SWITCH

Conveniently switch between UV-A & White Light

EagleEye™ 2

MODEL	NOMINAL STEADY-STATE UV-A INTENSITY WITH FILTER at 15 in (38 cm) ①	UV-A COVERAGE AREA at 15 in (38 cm) at minimum 1,000 $\mu\text{W}/\text{cm}^2$	WHITE LIGHT INTENSITY	VISIBLE LIGHT MEASUREMENT
EE-365	4,500 $\mu\text{W}/\text{cm}^2$	5.5 in (14 cm)	> 50 foot-candle (> 538 Lux)	< 1 foot-candle (<11 lux)

① UV-A intensity reading taken with the Spectroline® NDT AccuMAX™ Series meter, and is factory set to the value shown.



Light Source:	2 UV-A LED'S & 3 White LED'S
Lamp Style:	Cordless Handheld Lamp
Length:	3.75 in (9.5 cm)
Width:	2.25 in (5.7 cm)
Height:	1.85 in (4.7 cm)
Weight:	8 Oz (227 g) with battery
Run Time:	75 minutes (continuous)
Power Requirements:	One 3.7V 2200mA/Hr Lithium-Ion Battery (rechargeable)

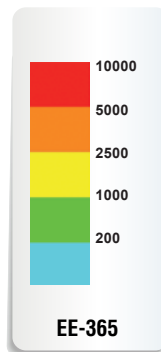
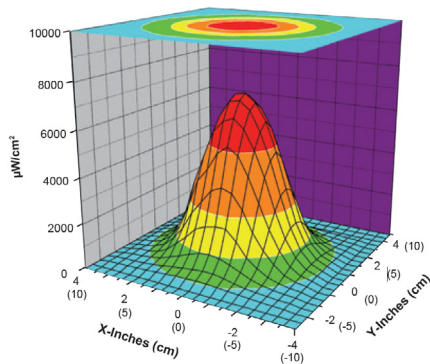
EK-3000 EagleEye™ 2 Kit

Comes complete with EE-365 EagleEye™ 2 Lamp with head strap, Lamp mount/Sprayer, two splash guards with integral particulate filter, two rechargeable batteries, battery charging cradle with AC cord set, UV- absorbing spectacles, and soft carrying case.

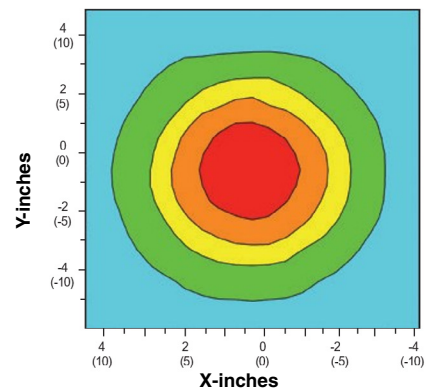


UV-A Beam Profiles

Surface Contour Profile at 15 in (38 cm)



Top Intensity Profile at 15 in (38 cm)



www.Spectro-UV.com

4 Dubon Ct., Farmingdale, NY 11735
866-230-7305

DISTRIBUTED BY:

NDT
2/24 A9082022-4
PRINTED IN USA